

**ELECTRICAL:**

Input Voltage: See xLDM700 spec sheet  
 Input Current: See xLDM700 spec sheet  
 Connector: Quick Connect, 5 pin Reverse Key Euro / Micro

**MECHANICAL:**

Materials: FDA compliant plastic and 316 stainless steel  
 Weight: 7.3lbs / 3.3kg  
 Dimensions: 7" / 177mm ID; 12" / 305mm OD visit  
[http:// http://spectrumillumination.com/products/wmdl7/](http://http://spectrumillumination.com/products/wmdl7/)  
 'Downloads' tab for detailed drawings

**ENVIRONMENTAL:**

Operating Temperature: 2° to 50°C  
 IP rating: IP-68

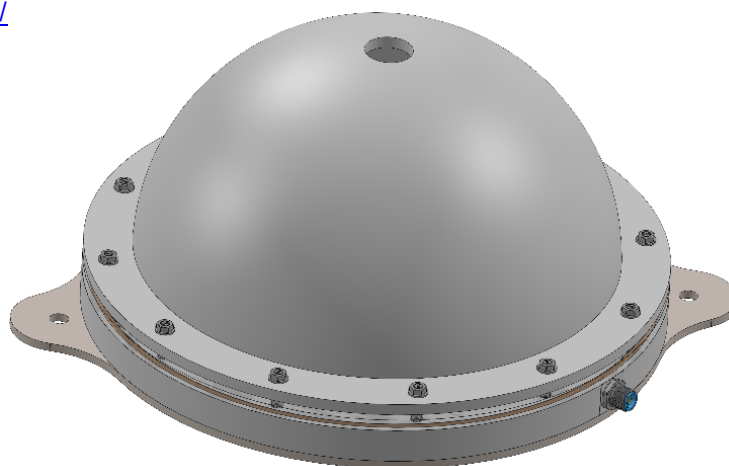
**ILLUMINATION:**

Light Source: LED – 9 Colors & IR  
 Quantity HB LED's: 10  
 Light Emitting Pattern: 7" / 177.8mm  
 LED Life: up to 100,000 hours\*.  
 \*Contact us for LED life information

**PART NUMBER DESIGNATION: WMDL7-XXX**

XXX = Light Color – 450, 470, 505, 530, 590, 630,  
 WHI, NWH, WWH, 850 & 940.

**WARNING !!!**  
 Use Only Spectrum Illumination  
 LDM Driver with Monster Lights.  
 Do Not Connect Monster Lights  
 Directly to 24VDC!



Color	Dash #	$\lambda$ Dominant Typical	$\lambda$ Dominant Range	Spectral Half-width $\Delta\lambda_{1/2}$	$\lambda$ Peak Typical	Units
Infrared	-940	940	n/a	45	945	nm
Infrared	-850	850	n/a	35	855	nm
Red	-630	625	620 - 630	15	633	nm
Amber	-590	590	585 - 595	15	594	nm
Green	-530	528	520 - 535	37	522	nm
Cyan	-505	505	500 - 520	40	510	nm
Blue	-470	475	465 - 485	20	465	nm
Royal Blue	-450	451	440 - 455pk	20	448	nm
Pure White	-WHI	Color Temp 5700 - 7000K CRI 70 typ*				
Natural White	-NWH	Color Temp 4000 - 5000K CRI 70 typ*				
Warm White	-WWH	Color Temp 2200 - 3750K CRI 70 typ*				

\* Narrow Color Temp / Higher CRI available on request



Light includes LDM DIN rail mount constant current driver and 4-meter cable (driver is available with variable or 0-10VDC intensity control - cable also available in 8, 15 and 30-meter



**R.J. Wilson, Inc.**  
 Imaging Components for Industry & Science

[www.rjwilson.com](http://www.rjwilson.com)  
[sales@rjwilson.com](mailto:sales@rjwilson.com)  
 781-335-5500

**MOUNTING:**

Care must be taken to mount the light in orientation that allows proper water drainage in washdown locations.

