



HIGH POWER HPRING UV

HIGH POWERFUL RING - 12 LEDS

▷ MACHINE VISION SYSTEM

▷ HIGH POWERFUL RING LIGHT

▷ ULTRAVIOLET ILLUMINATION

▷ OPTICAL BRIGHTENER

▷ QUALITY CONTROL WITH CAMERA

POWERFUL DIRECTIVE LIGHTING,
ADAPTED TO MOST CAMERAS.

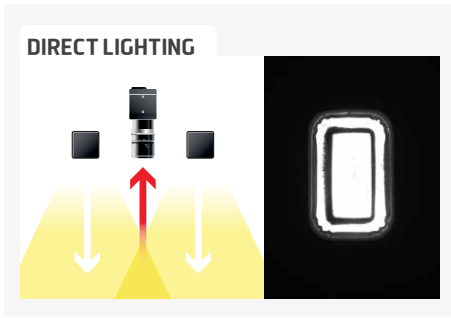


Composed of 12 high powerful 405 nm UV leds, the HPRING UV is obviously one of the most powerful lights among TPL Vision's products ranges. It is especially helpful for the direct lighting of circular areas, either in continuous mode or in strobe mode.

Its large internal diameter makes it the ideal partner for professional cameras, including those equipped with large lenses. The HPRING UV is specialized in the detection of UV optical brighteners: thanks to the HPRING UV, you can easily control the assembly defects, highlight the materials lacks and also read the UV markings.

UV-INFO

In the light spectrum, UV (ultra violet) rays are electromagnetic radiations situated between 280 and 400 nm (visible radiations: between 400 and 800 nm). What makes UV very interesting is the fact that, even if it is invisible for the naked eye, it can be observed by fluorescence: when some bodies are submitted to UV wavelengths, they emit a visible light. This is the principle of black light and of counterfeit notes detection. TPL Vision only uses UV belonging to the UV-A range.



TECHNICAL SPECIFICATIONS

Electronics	
Power supply	24 VDC $\pm 10\%$
Functioning mode	Continuous or strobe according to wiring
Maximum rising time	1.5 ms
Maximum falling time	1 ms
Wiring	M8 3 poles male connector
Max. Consumption	15 W
Optics	
Colour	UV 405
Number of Leds	12
Standard lens	$\pm 10^\circ$
Mechanics	
Dimensions	\varnothing Int : 58 mm - \varnothing Ext : 112 mm
Width	28 mm
Weight	400 g
Materials	Black anodized aluminum
Diffuser	Satin diffuser
Fixing	4 M3 screws
Environment	
Operating temperature	0 - 40°C
Storage temperature	0 - 60°C
IP protection	IP 40
Labels	RoHS-CE-WEEE

HOW TO BUILD YOUR REFERENCE

REQUIRED SETTINGS

HPRING

COLOUR

405

OPTIC ANGLE

7 $\pm 7^\circ$

10 $\pm 10^\circ$

17 $\pm 17^\circ$

25 $\pm 25^\circ$

NL NO LENS

OPTION

IP OPTION

IP40 RATED

IP65 IP65 RATED

EXAMPLES

HPRING LED UV 405 $\pm 10^\circ$ IP40 RATED: \rightarrow HPRING-405-10

HPRING LED UV 405 $\pm 17^\circ$ IP65 RATED: \rightarrow HPRING-405-17-IP65

HPRING LED UV 405 $\pm 25^\circ$ IP40 RATED: \rightarrow HPRING-405-25

RESULTS

HPRING-405-10

HPRING-405-17-IP65

HPRING-405-25

INFORMATION ABOUT LENSES

NARROW ANGLE = GIVE PRIORITY TO LIGHTING POWER.

WIDE ANGLE = GIVE PRIORITY TO HOMOGENEITY AND WIDE AREA

ACCESSORIES

M8 female – 3 pins cable



2 meters	Ref: C-M8-3P-2M
5 meters	Ref: C-M8-3P-5M
10 meters	Ref: C-M8-3P-10M

Safety glasses



Ref: EYE-PROTECT

MOUNTING DEVICES

LRMOUNT V1



Ref: LRMOUNT V1

LRMOUNT V2



Ref: LRMOUNT V2

LRMOUNT V3



Ref: LRMOUNT V3

LRMOUNT V4



Ref: LRMOUNT V4

LRMOUNT V5



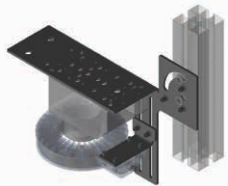
Ref: LRMOUNT V5

LRMOUNT V6



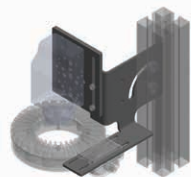
Ref: LRMOUNT V6

TPL-MOUNT-HPRING-H1



Ref: TPL-MOUNT-HPRING-H1

TPL-MOUNT-HPRING-V1



Ref: TPL-MOUNT-HPRING-V1

FOR CAMERA COMPATIBILITY, PLEASE VISIT OUR WEBSITE AT:
https://www.tpl-vision.fr/en/accessories/add-ons/large_ring_mounting_devices/



R.J. Wilson, Inc.
 Imaging Components for Industry & Science

www.rjwilson.com
sales@rjwilson.com
 781-335-5500

Features and presentations liable to modifications without prior notice. Ref.TS-030201-B2, 2019/12 Edition.

TPL VISION UK

Brenchley House - School Road - Charing - Kent TN27 0JW - UK
 Tel. +44 (0)1738 310 392 - contact@tpl-vision.co.uk

www.tpl-vision.com



Other available documents :

- PDF, DWG, DXF, IGS, STEP & X_Y DRAWINGS
- USER'S GUIDE

HPRING UV 405

RoHS COMPLIANT **CE**