

# MODULAR TINY M-TBAR



**COMPACT SIZE, POWERFUL ILLUMINATION**  
with built-in driver technology



- **ANGLE CHANGER** compatible
- **IP RATING** **IP67**
- **CURRENT CONTROL**  
integrated onto cable
- **EASY-CHAIN TOGETHER  
MULTIPLE LIGHTS**  
with no change to LED spacing
- **EASY MOUNTING**
- **AUTO-STROBE OVERDRIVE**



4 HIGH POWERED LEDS



EASY MOUNTING



CURRENT CONTROL



TPL VISION IS AN **ISO 9001**  
CERTIFIED MANUFACTURER.



**R.J. Wilson, Inc.**  
Imaging Components for Industry & Science

[www.rjwilson.com](http://www.rjwilson.com)  
[sales@rjwilson.com](mailto:sales@rjwilson.com)  
781-335-5500

# MODULAR TINY M-TBAR

## FEATURES OVERVIEW

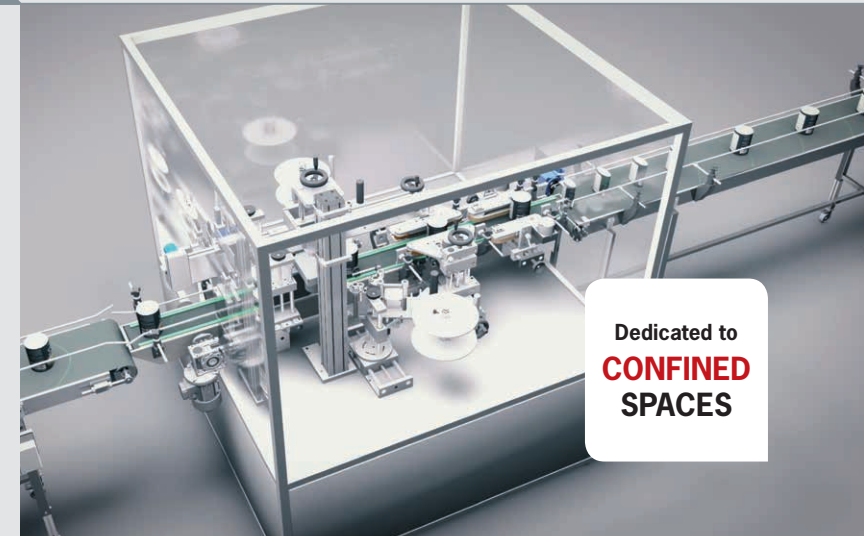
**ROBUST, ANODIZED  
ALUMINIUM HOUSING**

**IP67 RATING**  
with **vent** to avoid  
condensation.

**±5° LENS ANGLE**

Add **Angle Changers**  
for diffusion and to change  
beam angle.

**MAGNETIC ATTACHMENT**  
for testing **Angle Changers** & **SCREWS**  
for fixing them in final application.



# MODULAR TINY M-TBAR



## FEATURES OVERVIEW

### NO CHANGE IN LED SPACING

when you chain the bars together.



### CABLE MOUNTING FLEXIBILITY



**EASY T-SLOT MOUNTING** (nuts provided).



### POWER SUPPLY:

- **AUTOSTROBE** – automatic OverDrive brightness when product is strobed <math><10\text{ms}</math>
- **DIMMING** on continuous mode and overdrive mode
- **<math><15\mu\text{s}</math> RISE TIME**
- **IP67 ENCLOSURE**

### ■ STANDARD M12 5 PINS

- 24VDC
- GND
- PNP
- NPN
- DIMMING 0-10V = 100-30%



### 9 DIFFERENT ANGLE CHANGERS:



**CHANGE THE BEAM ANGLE EASILY**

- ➔ **Narrow  $\pm 10^\circ$**  (Standard & Polarised)
- ➔ **Medium  $\pm 17^\circ$**  (Standard & Polarised)
- ➔ **Wide  $\pm 25^\circ$**  (Standard & Polarised)
- ➔ **Line  $\pm 9-16^\circ$**  (Standard & Polarised)
- ➔ **Polariser alone**

# MODULAR TINY M-TBAR

## ANGLE CHANGER LIGHTING DATA

**AC-TBAR-N**  
(Narrow angle)



**AC-TBAR-M**  
(Medium angle)



**AC-TBAR-W**  
(Wide angle)



**AC-TBAR-L**  
(Line light)

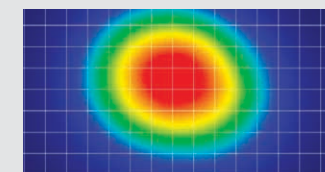
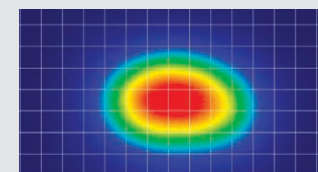


### ANGLE CHANGER

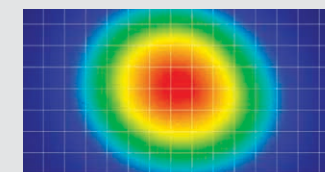
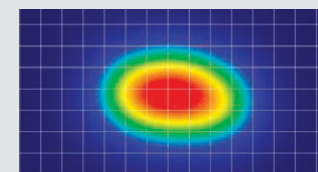
DISTANCE  
100 mm

DISTANCE  
200 mm

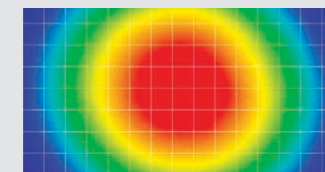
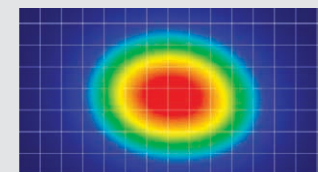
**NO ANGLE  
CHANGER**



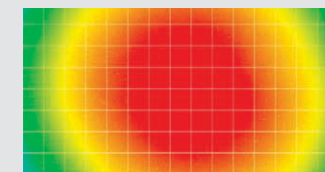
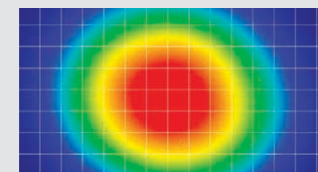
**AC-TBAR-N**  
(Narrow angle)



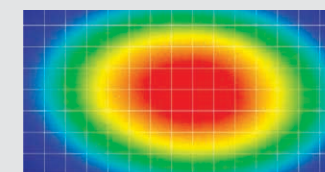
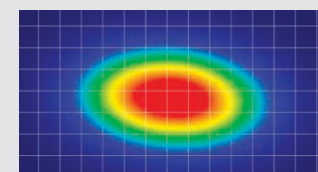
**AC-TBAR-M**  
(Medium angle)



**AC-TBAR-W**  
(Wide angle)



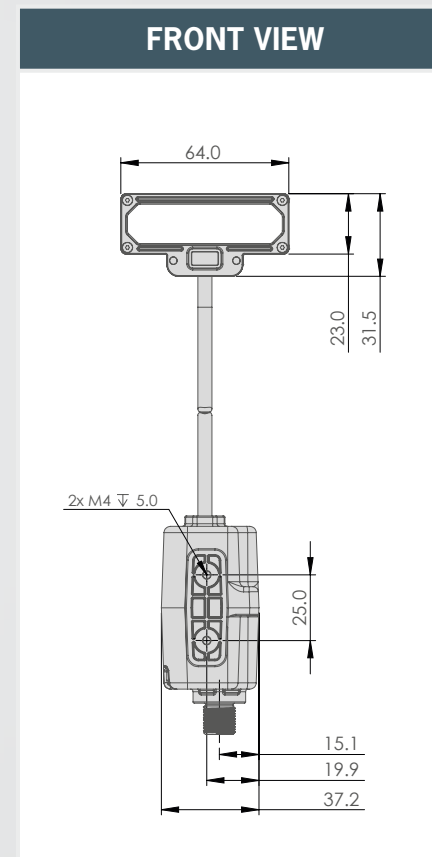
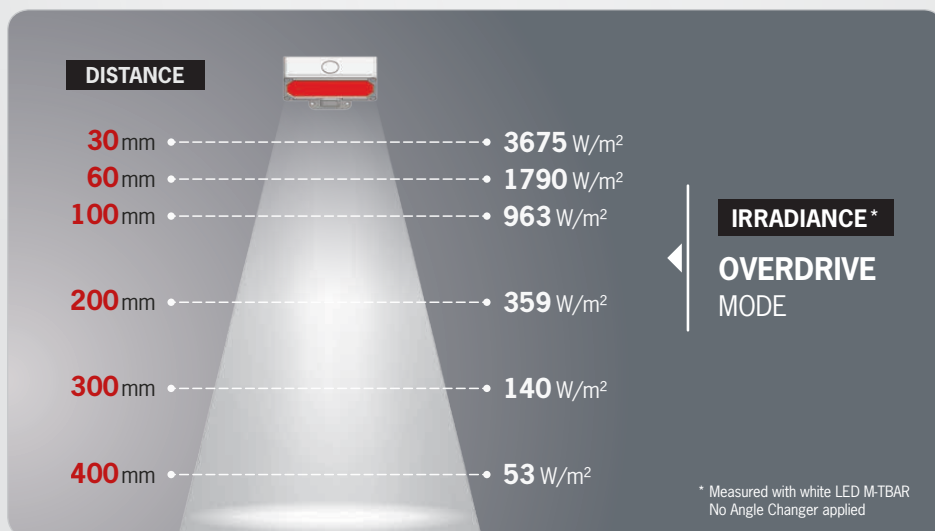
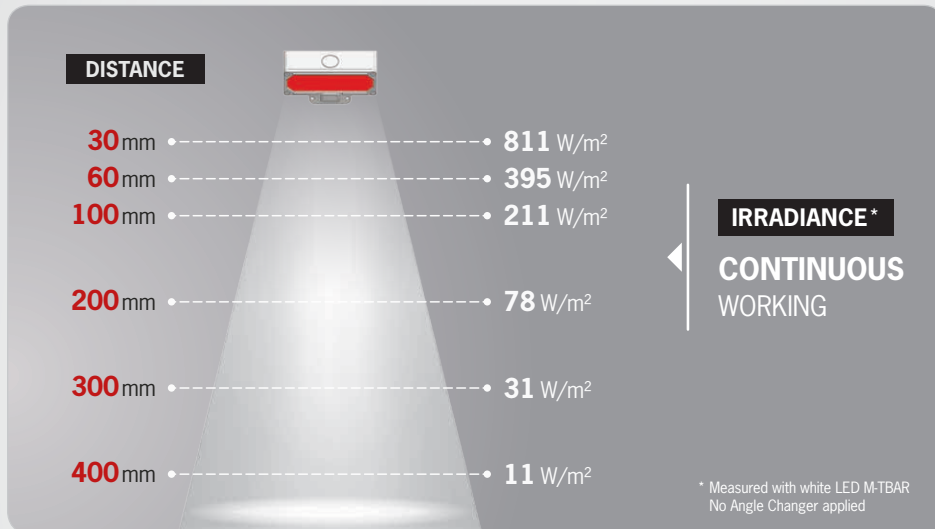
**AC-TBAR-L**  
(Line light)



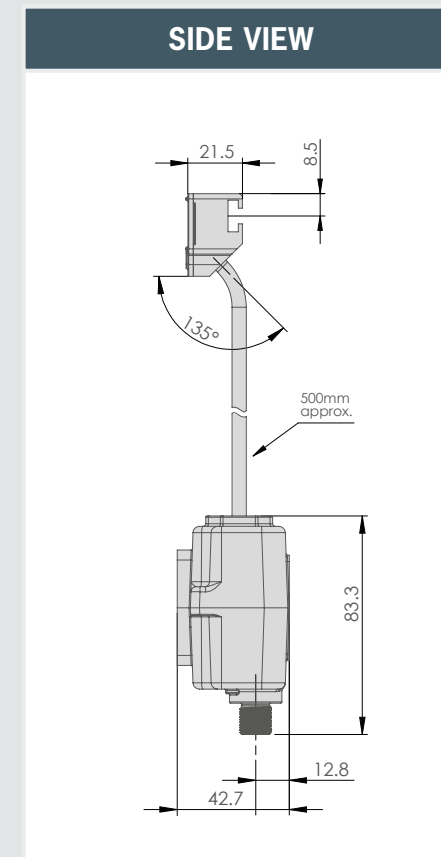
1 Square = 10mm x 10mm

# MODULAR TINY M-TBAR

## TECHNICAL DATA



	Length (mm)	Width (mm)	Thickness (mm)
<b>Light</b>	64	31.5	21.5
<b>Cable</b>	length: 500mm		



	Length (mm)	Width (mm)	Thickness (mm)
<b>Power supply</b>	83.3	37.2	42.7
<b>Connector</b>	M12 5 pins		

# MODULAR TINY M-TBAR



## TECHNICAL DATA & ORDER REFERENCES

### M-TBAR

Electronics	
Power Supply	24 VDC ±10%
Functioning Mode	Continuous working (CW), Strobe OverDrive
Rise and Fall Time	15µs/15µs, respectively
Wiring	M12 5 Pin Connector
Strobe Conditions	10ms Maximum On-time at 10% Duty Cycle
Peak Consumption (WHI) (OverDrive peak)	36 W
Optics	
Colours	White, Red, Green, Blue & Infrared
Mechanical	
Dimensions	64 x 31.5 x 21.5 mm
Weight	0.15 kg (light + control box)
Materials	Aluminium (anodised), ABS, PC, Stainless Steel, Neodymium
Mounting/Fixing	M4 T-NUT or M2 screws
Environment	
Operating Temperature	-10° to +40°C / 80% of humidity without condensation No thermal shock (max temperature variation: 10°C in 24h)
Storage Temperature	-20° to +60°C / 80% of humidity without condensation No thermal shock (max temperature variation: 10°C in 24h)
IP Protection	IP 67
Labels	RoHS-CE-UKCA-WEEE



Get more information:

[www.tpl-vision.com](http://www.tpl-vision.com)

### M-TBAR:

M-TBAR	LED NUMBER	COLOUR
	4	<b>WHI</b> (white)
		<b>630</b> (red)
		<b>525</b> (green)
		<b>470</b> (blue)
		<b>850</b> (infrared)

#### EXAMPLES:

- Modular Tiny M-TBAR 4 LEDs white → M-TBAR-4-WHI
- Modular Tiny M-TBAR 4 LEDs red → M-TBAR-4-630

### ANGLE CHANGERS:

AC-TBAR	ANGLE	OPTION: POLARIZER
	<b>N</b> (narrow)	<b>P1</b>
	<b>M</b> (medium)	
	<b>W</b> (wide)	
	<b>L</b> (line light)	
	<b>POLARIZER ONLY</b>	
	<b>POL1</b>	

#### EXAMPLES:

- Narrow → AC-TBAR-N
- Narrow with polariser → AC-TBAR-N-P1
- Polarizer only → AC-TBAR-POL1

### ANGLE CHANGER COMBO:

Ref: **AC-TBAR-CO-SM**

#### CONTENT:

- x1 AC-TBAR-N
- x1 AC-TBAR-M
- x1 AC-TBAR-W
- x1 AC-TBAR-L
- x1 AC-TBAR-POL1



### SWIVEL MOUNT:

Ref: **SWIVEL-MOUNT-T**

